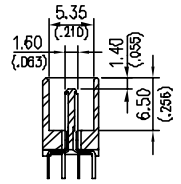
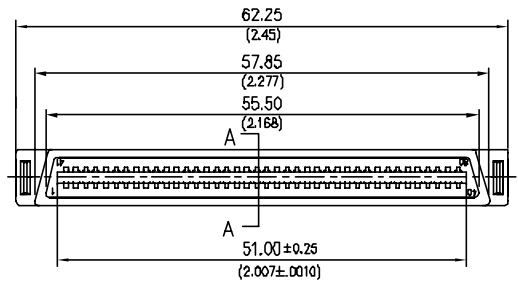
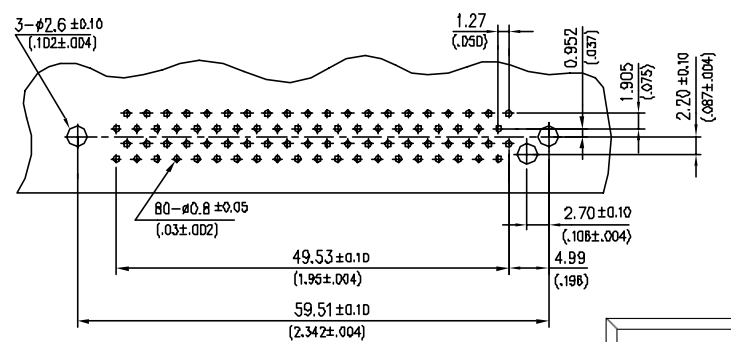
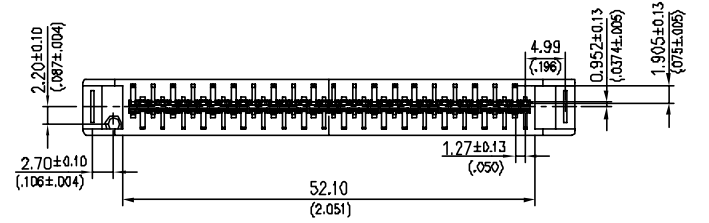
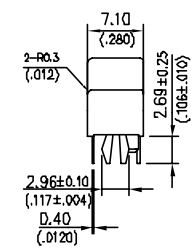
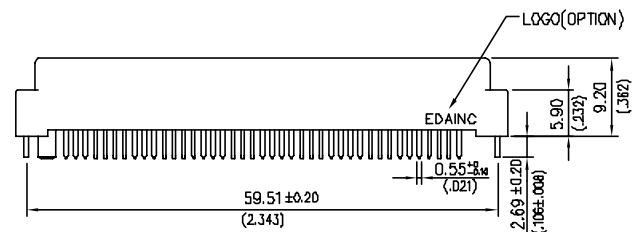


REV.	ZONE	LTR	DESCRIPTION	DATE	REVISER	APPD
2	B7	△	RENEW DRAWING	12/27/00	Perry	



A-A SECTION



RECOMMENDED PC BOARD

RoHS Compliant

ORDERING INFORMATION:

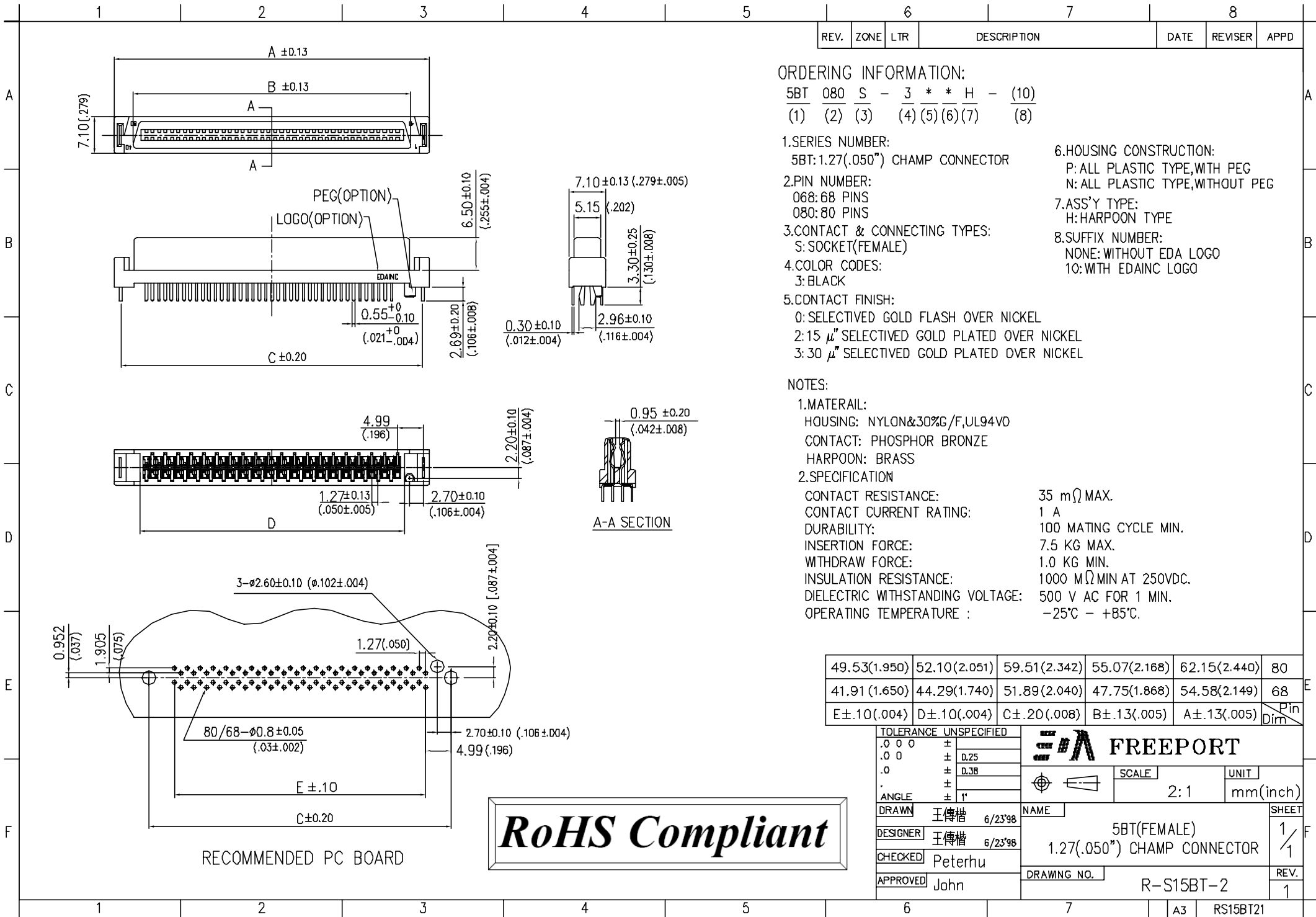
5BT 080 P - 3 0 P H - (10) - (HT)
 (1) (2) (3) (4) (5) (6) (7) (8) (9)

- 1.SERIES NUMBER:
5BT: 1.27(.050") CHAMP CONNECTOR
- 2.PIN NUMBER:
080: 80 PINS
- 3.CONTACT & CONNECTING TYPES:
P: PLUG(MALE)
- 4.COLOR CODES:
1: BULE
2: GRAY
3: BLACK
- 5.CONTACT FINISH:
0: SELECTED GOLD FLASH OVER NICKEL
2: 15 μ" SELECTED GOLD PLATED OVER NICKEL
3: 30 μ" SELECTED GOLD PLATED OVER NICKEL
- 6.HOUSING CONSTRUCTION:
N: ALL PLASTIC TYPE,WITHOUT PEG
P: ALL PLASTIC TYPE,WITH PEG
- 7.ASS'Y TYPE:
H: HARPOON TYPE
- 8.SUFFIX No.1:
△ NONE: W/O EDA INC LOGO
10: W/ EDA INC LOGO
- 9.SUFFIX No.2:
NONE: HOUSING MATERIAL: LCP+30%G/F
HT: HOUSING MATERIAL: PA46+30%G/F

NOTES:

- 1.MATERIAL:
HOUSING: LCP&PA46+30%G/F,UL94V0
CONTACT: BRASS
HARPOON: BRASS
- 2.SPECIFICATION
PIN NO.: 80 PINS
CONTACT RESISTANCE: 35 mΩ MAX.
CONTACT CURRENT RATING: 1 A
DURABILITY: 100 MATING CYCLE MIN.
INSULATION RESISTANCE: 1000 MΩ MIN AT 250VDC.
DIELECTRIC WITHSTANDING VOLTAGE: 500 V AC FOR 1 MIN.
OPERATING TEMPERATURE : -25°C - +85°C.

TOLERANCE UNSPECIFIED		5BT080P-30PH-(10)-(HT) PART NO.	
.000	±		
.00	±		
.0	±		
.	±		
ANGLE	± 1°	SCALE	UNIT
		2:1	mm(inch)
DRAWN	連進興 8/14'95	NAME	SHEET
DESIGNER	連進興 8/14'95	5BT080P(MALE)	1/1
CHECKED	Peterhu	1.27(.050") CHAMP CONNECTOR	
APPROVED	John	DRAWING NO.	REV.
		R-S15BT-1	2



ORDERING INFORMATION:

5BT 080 S - 3 * * H - (10)
 (1) (2) (3) (4) (5) (6) (7) (8)

1.SERIES NUMBER:

5BT: 1.27(.050") CHAMP CONNECTOR

2.PIN NUMBER:

068: 68 PINS
 080: 80 PINS

3.CONTACT & CONNECTING TYPES:

S: SOCKET(FEMALE)

4.COLOR CODES:

3: BLACK

5.CONTACT FINISH:

- 0: SELECTED GOLD FLASH OVER NICKEL
- 2: 15 μ" SELECTED GOLD PLATED OVER NICKEL
- 3: 30 μ" SELECTED GOLD PLATED OVER NICKEL

6.HOUSING CONSTRUCTION:

P: ALL PLASTIC TYPE, WITH PEG
 N: ALL PLASTIC TYPE, WITHOUT PEG

7.ASS'Y TYPE:
 H: HARPOON TYPE

8.SUFFIX NUMBER:
 NONE: WITHOUT EDA LOGO
 10: WITH EDAINC LOGO

NOTES:

1.MATERIAL:

HOUSING: NYLON&30%G/F, UL94V0
 CONTACT: PHOSPHOR BRONZE
 HARPOON: BRASS

2.SPECIFICATION

CONTACT RESISTANCE: 35 mΩ MAX.
 CONTACT CURRENT RATING: 1 A
 DURABILITY: 100 MATING CYCLE MIN.
 INSERTION FORCE: 7.5 KG MAX.
 WITHDRAW FORCE: 1.0 KG MIN.
 INSULATION RESISTANCE: 1000 MΩ MIN AT 250VDC.
 DIELECTRIC WITHSTANDING VOLTAGE: 500 V AC FOR 1 MIN.
 OPERATING TEMPERATURE: -25°C - +85°C.

49.53(1.950)	52.10(2.051)	59.51(2.342)	55.07(2.168)	62.15(2.440)	80
41.91(1.650)	44.29(1.740)	51.89(2.040)	47.75(1.868)	54.58(2.149)	68
E±.10(.004)	D±.10(.004)	C±.20(.008)	B±.13(.005)	A±.13(.005)	Pin Dim

TOLERANCE UNSPECIFIED

.0	0	±
.0	0	± 0.25
.0		± 0.38
.		±
ANGLE		± 1°

FREEPORT

SCALE	UNIT
2:1	mm(inch)

DRAWN	王傳楷 6/23'98	NAME		SHEET	
DESIGNER	王傳楷 6/23'98	5BT(FEMALE) 1.27(.050") CHAMP CONNECTOR		1	
CHECKED	Peterhu	DRAWING NO.	R-S15BT-2	REV.	1
APPROVED	John				

RoHS Compliant

RECOMMENDED PC BOARD