

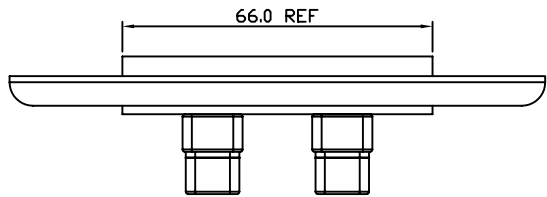
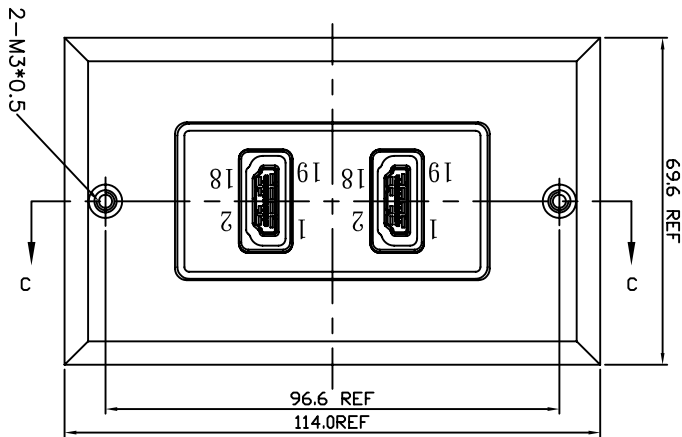
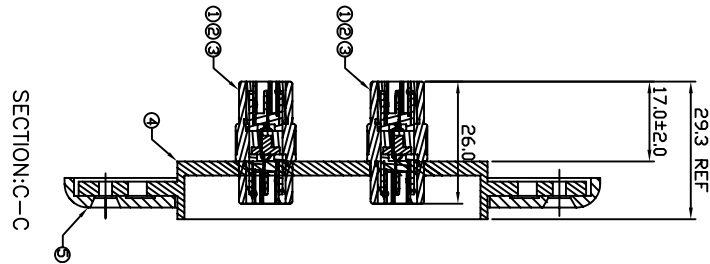
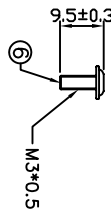
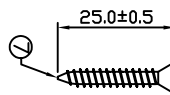
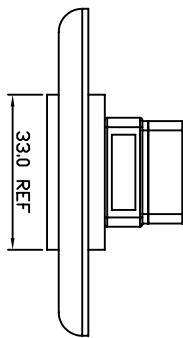
CUSTOMER NAME	CUST P/N	FREEPORT P/N
---------------	----------	--------------

REV.	ZONE	LTR	DESCRIPTION	DATE	REVISER	APPD
------	------	-----	-------------	------	---------	------

PIN ASSIGNMENT:

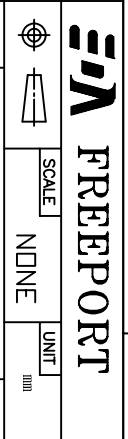
HDMI 19F HDMI 19F

- 3 (TMDS Data 2-)
- 1 (TMDS Data 2+)
- 2 (TMDS Data 2 Shield)
- 6 (TMDS Data 1-)
- 4 (TMDS Data 1+)
- 5 (TMDS Data 1 Shield)
- 9 (TMDS Data 0-)
- 7 (TMDS Data 0+)
- 8 (TMDS Data 0 Shield)
- 12 (TMDS Clock -)
- 10 (TMDS Clock +)
- 11 (TMDS Clock Shield)
- 18 (+5V Power)
- 17 (Ground)
- 15 (DDC Clock)
- 16 (DDC Data)
- 19 (Hot Plug Detect)
- 13 (CEC)
- 14 (NC)
- SHELL



- ELECTRICAL CHARACTER:
- CURRENT RATING: DC 1A
  - WITHSTANDING VOLTAGE: DC 300VDC, 10ms
  - INSULATION RESISTANCE: 10Mohm
  - CONDUCTIVE RESISTANCE: 2 Ohm

NO.	PART NAME	SPEC. DESCRIPTION	REMAKE
7	SCREW 2	FLAT HEAD SCREW FTS-1 3.5*25	
6	SCREW 1	SCREW M3*0.5 $\phi$ 7.0* $l$ /9.3	
5	PANEL	PANEL 2	
4	PANEL	PANEL 1	
3	PVC	PVC: 45Pa ,UI.94V-0	
2	PE	PE LOW DENSITY	
1	HDMI CONN	HDMI CONN. 19P A TYPE FEMALE SOLDER TYPE	
NO.	PART NAME	SPEC. DESCRIPTION	REMAKE
MATERIAL			
TOLERANCE UNSPECIFIED			
		$\pm .10$	
		$\pm .25$	
		$\pm .38$	
		$\pm .50$	
FINISH			
DRAWING			
DRAWING NO. 9/23-05			



HDMI WALLPLATE ASSEMBLY  
(TWO POLES 180°)

DESIGNER	PUTTD	9/23-05	NAME	SCALE	NONE	UNIT	mm
CHECKED			DRAWING NO.				
APPROVED							
SHEET							1/2
REV.							1.0