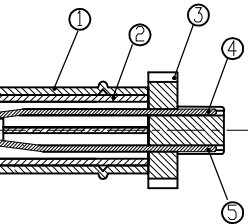
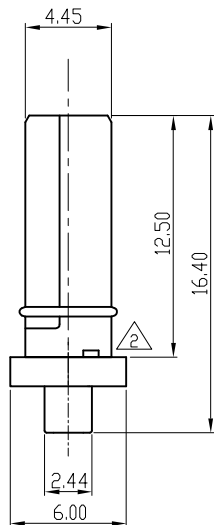
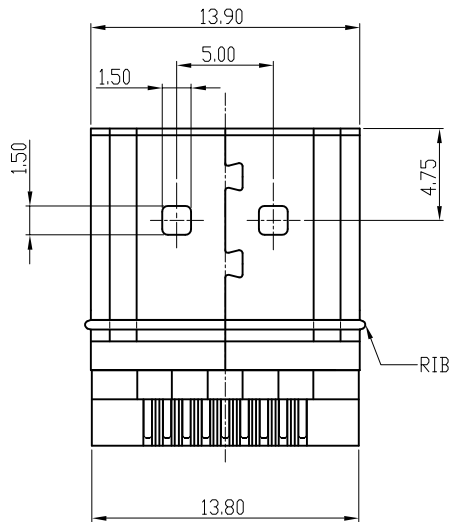


SECTION B-B  
SCALE :1 : 1



SECTION C-C  
SCALE :1 : 1

REV.	ZONE	LTR	DESCRIPTION	DATE	REVISER	APPD
0.2		△2	MODIFY THE ORDER INFORMATION	4/9 04	Sam	Peter
0.3		△1	ADD THE LEAD FREE REMARK	6/9 04	Sam	
0.4		△2	ADD DIMPLE TO SHELL	6/16 04	Sam	

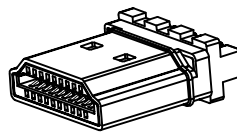
ORDER INFORMATION:

51S 019 P - 3 \* T \* - \*  
(1) (2) (3) (4) (5) (6) (7) (8)

- (1) SERIES NUMBER:  
51S : HDMI MALE CONNECTOR, SOLDER TYPE
- (2) NO. OF POSITION:  
019 :19POSITIONS
- (3) CONTACT &CONNECTING TYPES:  
P : PLUG  
S : SOCKET
- (4) : COLOR CODES:  
3 :BLACK
- (5) PLATING OF CONTACT :  
0 : GOLD FLASH OVER NICKEL  
2 : 15u"GOLD OVER NICKEL  
3 : 30u"GOLD OVER NICKEL
- (6) PLATING OF SHELL :  
T : TIN PLATING  
N : Ni PLATING  
△0.2 L : Au:3u\*Min. PLATING
- (7) SHELL CONSTRUCTION TYPE:  
1 : WITH RIB FOR SHELL
- (8) SUFIX NO. :  
A : WITH FREEPORT LOGO AND W/O SHIELD  
B : WITHOUT FREEPORT LOGO AND SHIELD

NOTE:

- 1. MECHANICAL :  
1.1 INSERTION FORCE :44.1 N MAX  
1.2 WITHDRAWAL FORCE :9.8 N MIN.
- 2. ELECTRICAL :  
2.1 CONTACT CURRENT RATING: 0.5A MIN.  
2.2 VOLTAGE RATING :40V AC (rms)  
2.3 WITHSTANDING VOLTAGE: 500 VAC FOR 1 MINUTE.  
2.4 INSULATION RESISTANCE: 100 MEGOHMS MIN.  
2.5 CONTACT RESISTANCE: 30 MILLIOHMS MAX.
- 3. ENVIRONMENTAL :  
3.1 OPERATING TEMPERATURE:-25°C TO +85°C
- 4. NO.18 CONTACT IS LOWER PIN,SHOWN AS SECTION C-C.



△1 LEAD FREE

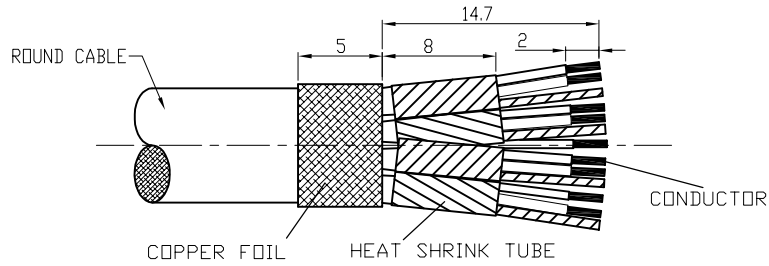
⑤	CONTACT 2	1	COPPER ALLOY	GOLD PLATED OVER NICKEL
④	CONTACT 1	18	COPPER ALLOY	GOLD PLATED OVER NICKEL
③	COVER	1	THERMOPLASTIC	UL94V-0
②	HOUSING	1	THERMOPLASTIC	UL94V-0
①	SHELL	1	COPPER ALLOY	GOLD,TIN OR NICKEL PLATING
ITEM	PART NAME	Q'TY/EA	MATETIALS	NOTE

MATERIAL	TOLERANCE UNSPECIFIED		SCALE	UNIT
	.0 0 0 ± .0 0 ± 0.20 .0 ± 0.25 . ± ANGLE ± 2°			
FINISH	Draw	NAME	SHEET	
	Designer Sam 3/17 '04 Checked Approved			HDMI MALE CONNECTER (TYPE A)
Drawing No. R-S151S-1			REV. 0.5	

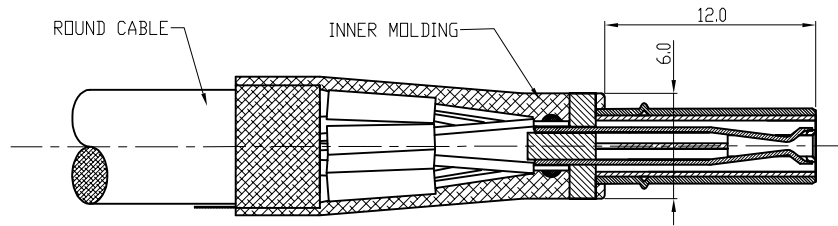
REV.	ZONE	LTR	DESCRIPTION	DATE	REVISER	APPD
0.5		3	MODIFY THE CHAMFER	6/28 04	Sam	

# APPLICATION GUIDE :

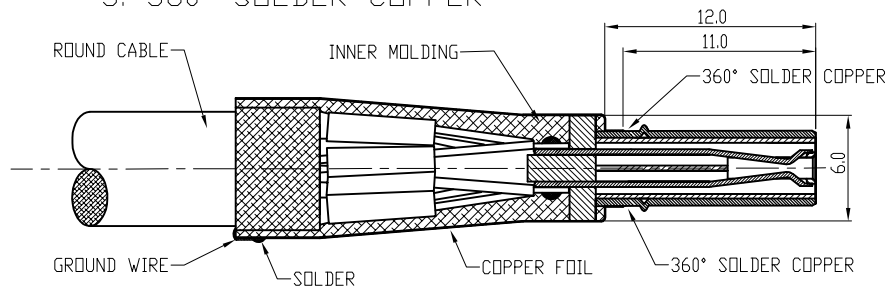
## 1. CABLE TREATMENT:



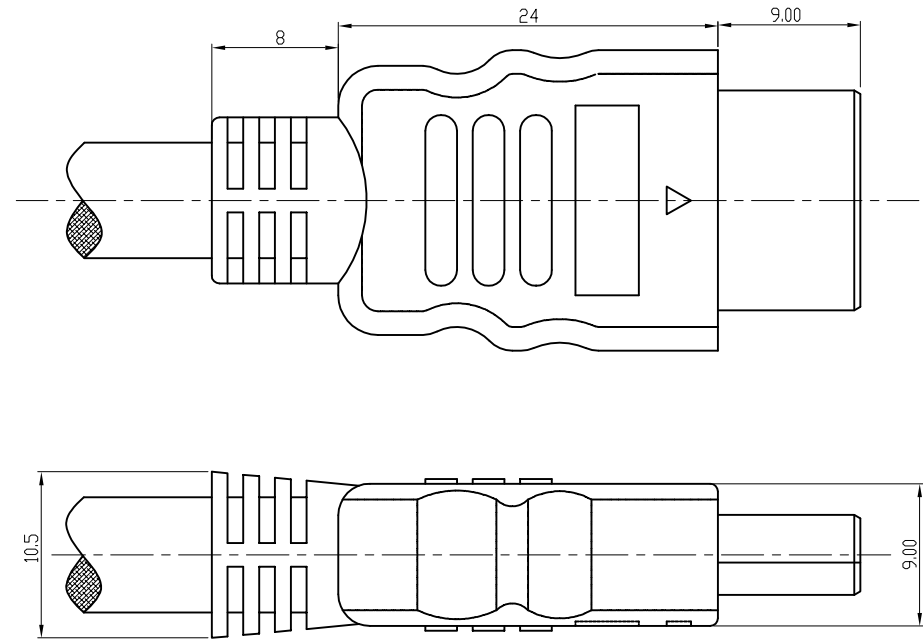
## 2. SOLDER AND INNER MOLDING



## 3. 360° SOLDER COPPER



## 4. OVER MOLDING



<b>MATERIAL</b>	TOLERANCE UNSPECIFIED		SCALE NONE	UNIT MM
	.000 ± .00 ±0.38 .0 ±0.50 ANGLE ±1.0 ±2°			
<b>FINISH</b>	Draw Sam 3/17 '04	NAME HDMI MALE CONNECTER (TYPE A)	SHEET 2/2	
	Designer Sam 3/17 '04			
	Checked	Drawing No. R-S151S-1	REV. 0.5	
	Approved			