

REV	ZONE	LTR	DESCRIPTION	DATE	REVISER	APPD
-----	------	-----	-------------	------	---------	------

ORDERING INFORMATION

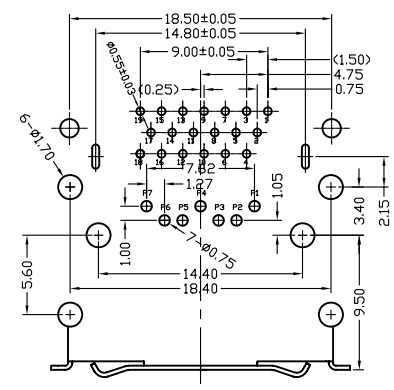
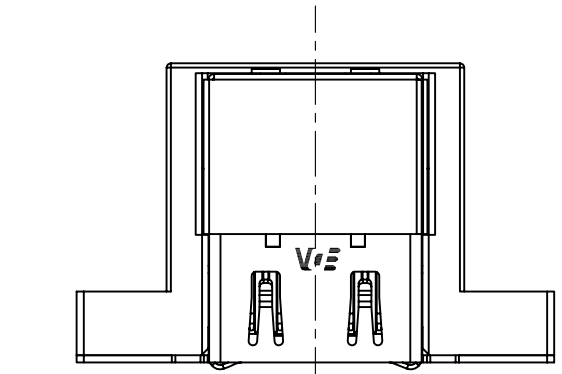
51E H E S - 3 * * * - *
 (1) (2) (3) (4) (5) (6) (7) (8)

- SERIES NO.
51E: DUAL HDMI STACKED CONNECTOR THROUGH HOLE TYPE
- PRODUCT CONSTRUCTION TYPE
HE:HDMI TO ESATA
- CONTACT & CONNECTIONG TYPES:
S: SOCKET
- COLOR CODES
3: BLACK
- CONTACT PLATING:
0 :SELECTIVE GOLD FLASH OVER NICKEL
2: SELECTIVE 15u" GOLD OVER NICKEL
3: SELECTIVE 30u" GOLD OVER NICKEL
4: GOLD FLASH ALLOVER OVER NICKEL
5: SELECTIVE 15u" GOLD IN CONTACT AREA AND GOLD FLASH ALLOVER OVER NICKEL
6: SELECTIVE 30u" GOLD IN CONTACT AREA AND GOLD FLASH ALLOVER OVER NICKEL
- SHELL CONSTRUCTION
D: SHELL TAIL IS THROUGH HOLE TYPE
- SHELL PLATING
N: SOLDERABLE NICKEL PLATED
T: TIN PLATED
4: GOLD FLASH PLATED
- SUFFIX NO.
A: WITH FREEPORT LOGO
B: WITHOUT LOGO

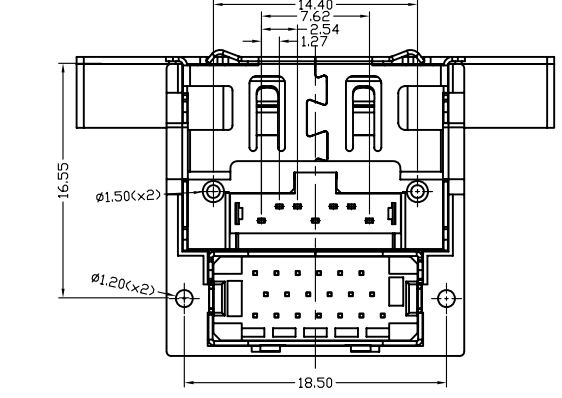
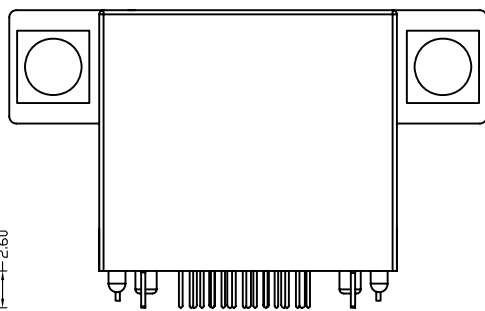
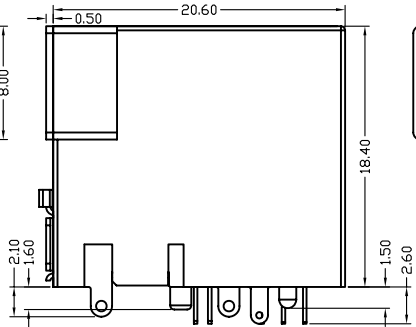
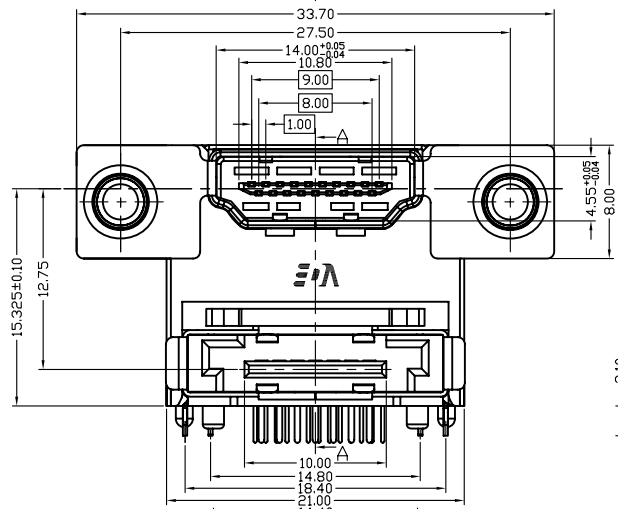
REMARKS:

1)THE ▼ MARKER DIMENSIONS ARE IMPORTANT AND MUST BE CONTROLLED BY QC

RoHS compliant



RECOMMENDED PCB LAYOUT
 (THICKNESS=1.6±0.15mm)



MATERIAL	TOLERANCE UNSPECIFIED		
	± ±0.25 ±0.4 ±0.8		
FINISH	ANGLE ± 1°	SCALE 1:1	UNIT mm
	DRAWN	NAME	
	DESIGNER	SHEET	
	CHECKED	1/1	
APPROVED	DRAWING NO. R-S151E-2		REV 1.0