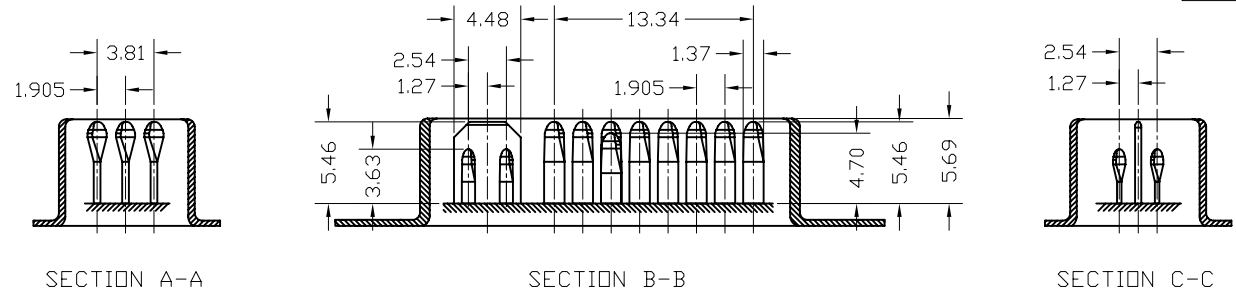
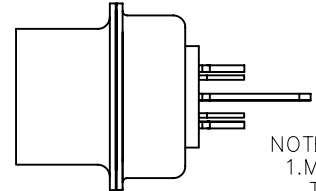
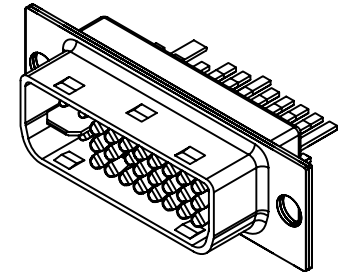
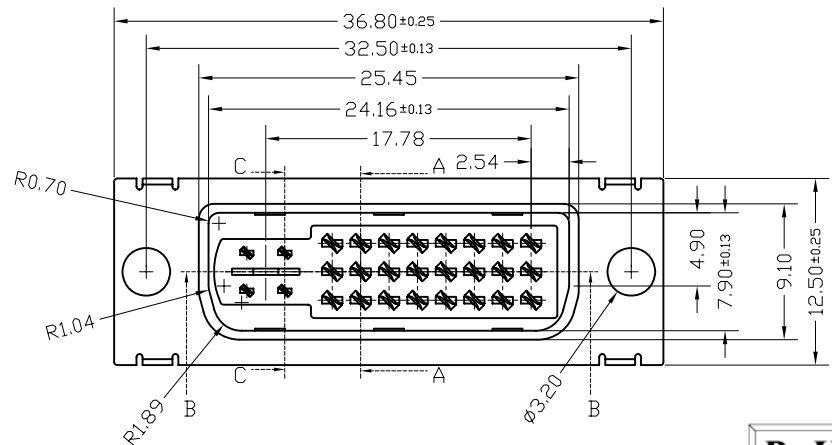


REV.	ZONE	LTR	DESCRIPTION	DATE	REVISER	APPD
------	------	-----	-------------	------	---------	------



ORDERING INFORMATION  
3 J S 29 P - 4 7 4 0  
 (1) (2) (3) (4) (5) (6) (7) (8)

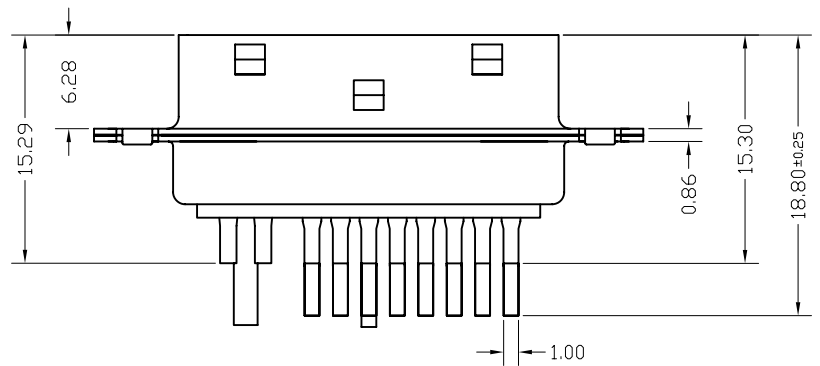
- SERIES CODE: 3J: DVI CONNECTOR
- STRUCTURE CODE: S: SOLDER TYPE
- NO. OF CONTACT: 29: 24+5 POSITIONS.
- CONTACT TYPE: P: PLUG
- COLOR CODE: 3: BLACK 4: WHITE
- CONTACT FINISH:
  - 0: GOLD FLASH PLATED ON CONTACT AREA, TIN PLATED ON SOLDER TAIL.
  - 2: 15 u" GOLD PLATED ON CONTACT AREA, TIN PLATED ON SOLDER TAIL.
  - 3: 30u" GOLD PLATED ON CONTACT AREA, TIN PLATED ON SOLDER TAIL.
  - 7: 3u" GOLD PLATED ON CONTACT AREA, TIN PLATED ON SOLDER TAIL.
  - C: 5u" GOLD PLATED ON CONTACT AREA, TIN PLATED ON SOLDER TAIL.
- SHELL PLATING: N: NICKEL PLATED ON FRONT, TIN PLATED ON REAR. 4: GOLD FLASH PLATED OVER NICKEL ON FRONT, TIN PLATED ON REAR.
- ACCESSORY CODE: 0: WITHOUT ACCESSORY



- NOTES:
- MATERIAL: TERMINAL: BRASS, GOLD PLATED. HOUSING: GLASS FILLED THERMOPLASTIC, BLACK&WHITE UL94V-0. SHIELD: SPCC.

**RoHS Compliant**

- SPECIFICATIONS:
  - CURRENT RATING : 1.5 A
  - INSULATION RESISTANCE : 1000 MΩ MIN. AT 500V DC
  - DIELECTRIC WITHSTANDING VOLTAGE : AC 500V MIN. (FOR 1 MINUTE)
  - CONTACT RESISTANCE : 20mΩ MAX.
  - OPERATING TEMPERATURE : -25°C - +85°C



MATERIAL		TOLERANCE UNSPECIFIED	PART NO.	
SEE NOTE	.0 0 0	± 0.08		
	.0 0	± 0.20		
SEE NOTE	.0	±	SCALE	UNIT
	.	±	1:1	mm
	ANGLE	±	NAME	
	DRAWN Wujian4/26-06		3JS SERIES	
DESIGNER		DVI (24+5 )PIN		SHEET
CHECKED Peterhu		SOLDER TYPE CONNECTOR		1/1
APPROVED John		DRAWING NO.	R-S13JS-8	REV.
				0.1