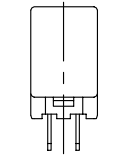
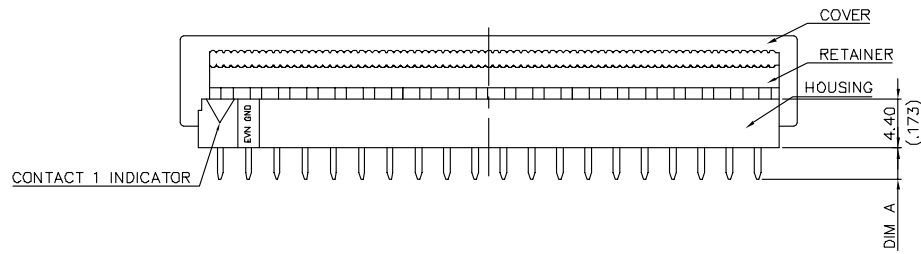


REV	ZONE	LTR	DESCRIPTION	DATE	REVISER	APPD
3		3	RENEW DRAWING	8/8-06	MWLin	



BEFORE ASS'Y

ORDERING INFORMATION.

6G 040 - * T * - (10)
 (1) (2) (3) (4) (5) (6)

1.SERIES NO.

.6G- 2.54mm MATING/.635mm I.D.C.
 CONNECTOR P.C.B TYPE

2.NO. OF CONTACTS

.EX. 040-40 POSITIONS

3.HOUSING COLOR CODE

.1- BLUE .2 - GRAY .3- BLACK

4.CONTACT FINISH

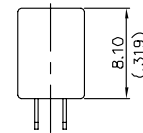
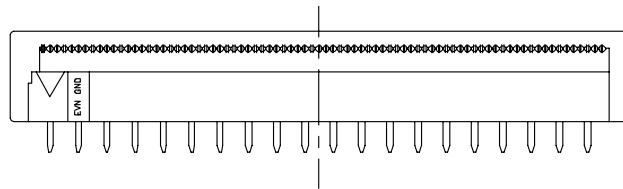
.T- 100u" TIN PLATING OVER 50u" NICKEL

5.SOLDER TAIL LENGTH

.1- 2.80mm
 .2- 3.20mm

6.SUFFIX NO.

.10-WITH "EDAING" LOGO
 .NONE-WITHOUT "EDAING" LOGO



AFTER ASS'Y

SPECIFICATIONS

.VOLTAGE RATING: 30 VAC

.CURRENT RATING: 0.5 AMP FOR SIGNAL CONTACTS,3.5 AMPS FOR GROUND BUS.

.DIELECTRIC WITHSTANDING VOLTAGE: 250 V AC MIN. FOR 1 MINUTE

.INSULATION RESISTANCE: 500 MΩ MIN. AT 250 V DC

.WORKING TEMPERATURE: -25°C TO +85°C

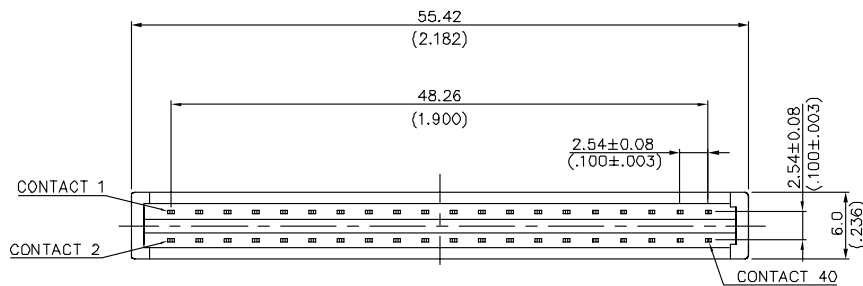
.CONTACT RESISTANCE: 35mΩ MAX. MATED

.INSULATOR MATERIAL: GLASS FILLED PBT RESIN,UL 94V-0

.CONTACT MATERIAL:PHOSPHOR BRONZE, TIN PLATED OVER NICKEL.

.GROUND BUS : PHOSPHOR BRONZE, TIN PLATED OVER NICKEL.

.WIRE SIZE: AWG 30 .025"(.635MM) CENTER RIBBON CABLE



6G040-*T2-(10)	3.20(0.126)
6G040-*T1-(10)	2.80(0.110)
PART NO	DIM A

RoHS Compliant

MATERIAL	TOLERANCE UNSPECIFIED ± .25 ± .38 ± 1"	FREEPORT	
		SCALE NONE	UNIT mm/inch
FINISH	DRAWN MWLin 8/8-06	NAME	
	DESIGNER MWLin	6G-2.54mm MATING/.635mm I.D.C CONNECTOR P.C.B TYPE	
	CHECKED Peterhu	DRAWING NO.	
	APPROVED John	R-S106G-0	
		SHEET 1/1	REV 3

REV	ZONE	LTR	DESCRIPTION	DATE	REVISER	APPD
2	D8	△	MODIFY PLATING SPECIFICATION	8/8-06	MWLIn	

ORDERING INFORMATION.

6G 040 - * T * - (10) - T
 (1) (2) (3) (4) (5) (6) (7)

- SERIES NO.
.6G- 2.54mm MATING/.635mm I.D.C.
CONNECTOR P.C.B TYPE
- NO. OF CONTACTS
.EX. 040-40 POSITIONS
- HOUSING COLOR CODE
.1 : BLUE .2 : GRAY .3- BLACK
- CONTACT FINISH
.T- 100u" TIN PLATING OVER 50u" NICKEL
- SOLDER TAIL LENGTH
.1- 2.80mm
.2- 3.20mm
- SUFFIX NO1.
.10-WITH "EDAINC" LOGO
.NONE-WITHOUT "EDAINC" LOGO
- SUFFIX NO2.
.T-LOW PROFILE TYPE

SPECIFICATIONS

- .VOLTAGE RATING: 30 VAC
- .CURRENT RATING: 0.5 AMP FOR SIGNAL CONTACTS,3.5 AMPS FOR GROUND BUS.
- .DIELECTRIC WITHSTANDING VOLTAGE: 250 V AC MIN. FOR 1 MINUTE
- .INSULATION RESISTANCE: 500 MΩ MIN. AT 250 V DC
- .WORKING TEMPERATURE: -25°C TO +85°C
- .CONTACT RESISTANCE: 35mΩ MAX. MATED
- .INSULATOR MATERIAL: GLASS FILLED PBT RESIN,UL 94V-0
- .CONTACT MATERIAL:PHOSPHOR BRONZE, TIN PLATED OVER NICKEL △
- .GROUND BUS : PHOSPHOR BRONZE, TIN PLATED OVER NICKEL.△
- .WIRE SIZE: AWG 30 .025"(.635MM) CENTER RIBBON CABLE

6G040-*T2-(10)-T	3.20(0.126)
6G040-*T1-(10)-T	2.80(0.110)
PART NO	DIM A

MATERIAL 	TOLERANCE UNSPECIFIED	FREEPORT SCALE NONE UNIT mm/inch
	± .25	
	± .38	
	± 1'	
FINISH 	DRAWN LPB 7/18.02	NAME 6G-2.54mm MATING/.635mm I.D.C CONNECTOR P.C.B TYPE LOW PROFILE TYPE
	DESIGNER LPB 7/18.02	
	CHECKED Peterhu	
	APPROVED John	
DRAWING NO. R-S106G-1		SHEET 1/1

RoHS Compliant

