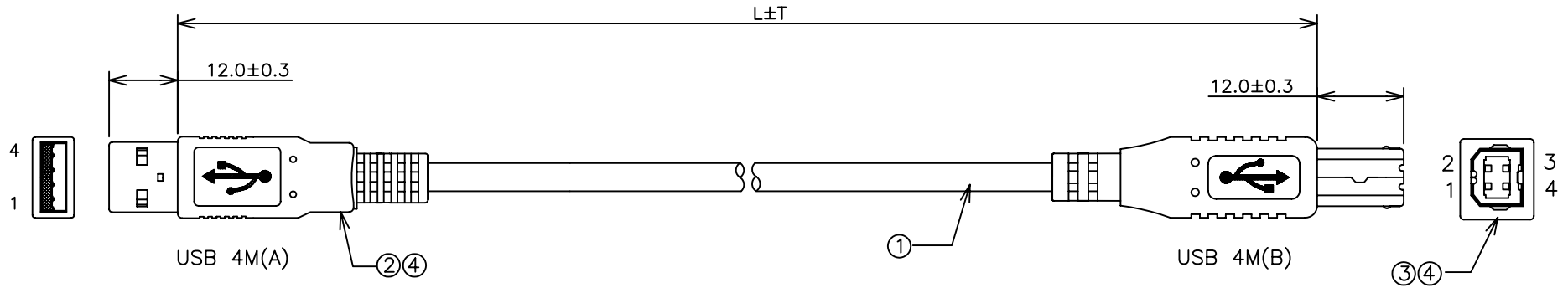


1	2	3	4	5	6	7	8			
CUSTOMER	CUST P/N	FREEPORT P/N		REV	ZONE	LTR	DESCRIPTION	DATE	REVISER	APPD
A11		18-940401**								



PIN ASSIGNMENT:

USB 4 MALE(A)		USB 4 MALE(B)	
1	RED	1	
2	WHITE	2	
3	GREEN	3	
4	BLACK	4	
SHELL	BRAID+DRAIN	SHELL	

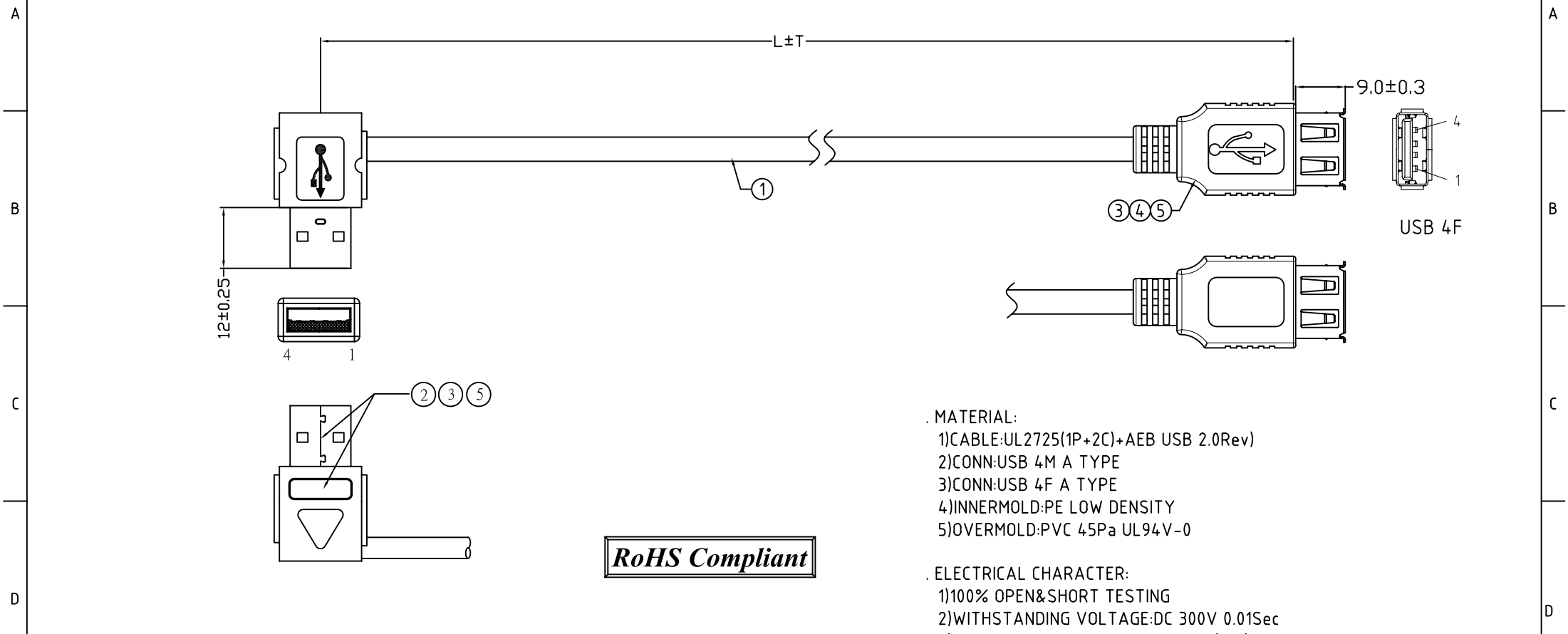
RoHS Compliant

ELECTRICAL CHARACTER:

- 100% OPEN&SHORT TEST °
- HI-POT: DC300V/0.01S
- INSULATION RESISTANCE: 10Mohm MIN
- CONACT RESISTANCE: 2.0 Ohm MAX

4	PVC	PVC 45PA BEIGE UL94-V0	
3	USB CONN	USB B TYPE 4PIN MALE	
2	USB CONN	USB A TYPE 4PIN MALE	
1	USB 2.0 CBLE	USB2.0 UL2725 1PR+2C AEB	
NO.	PART NAME	SPEC DESCRIPTION	REMAKE
MATERIAL	<input checked="" type="checkbox"/>	TOLERANCE UNSPECIFIED ± ± ± ± ± ± ANGLE	 SCALE NON UNIT mm DRAWING NO. 18-940401** SHEET 1/1 REV 1.0
FINISH	<input checked="" type="checkbox"/>	DRAWN: Frank DESIGNER: CHECKED: Kris APPROVED: Dived	
NAME			
ROUND CABLE			

1		2		3		4		5		6		7		8	
CUSTOMER	CUST P/N	FREEPORT P/N		REV	ZONE	LTR	DESCRIPTION			DATE	REVISER	APPD			
All		18-940402xx													

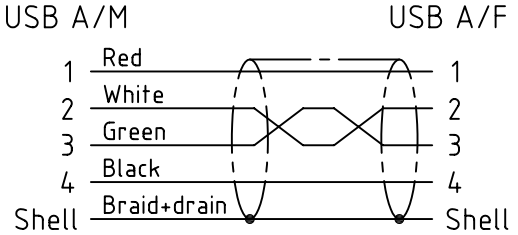


RoHS Compliant

- MATERIAL:
- 1)CABLE:UL2725(1P+2C)+AEB USB 2.0Rev)
 - 2)CONN:USB 4M A TYPE
 - 3)CONN:USB 4F A TYPE
 - 4)INNERMOLD:PE LOW DENSITY
 - 5)OVERMOLD:PVC 45Pa UL94V-0
- ELECTRICAL CHARACTER:
- 1)100% OPEN&SHORT TESTING
 - 2)WITHSTANDING VOLTAGE:DC 300V 0.01Sec
 - 3)INSULATION RESISTANCE:10M Ohm(Min)
 - 4)CONDUCTIVE RESISTANCE:2 Ohm(Max)

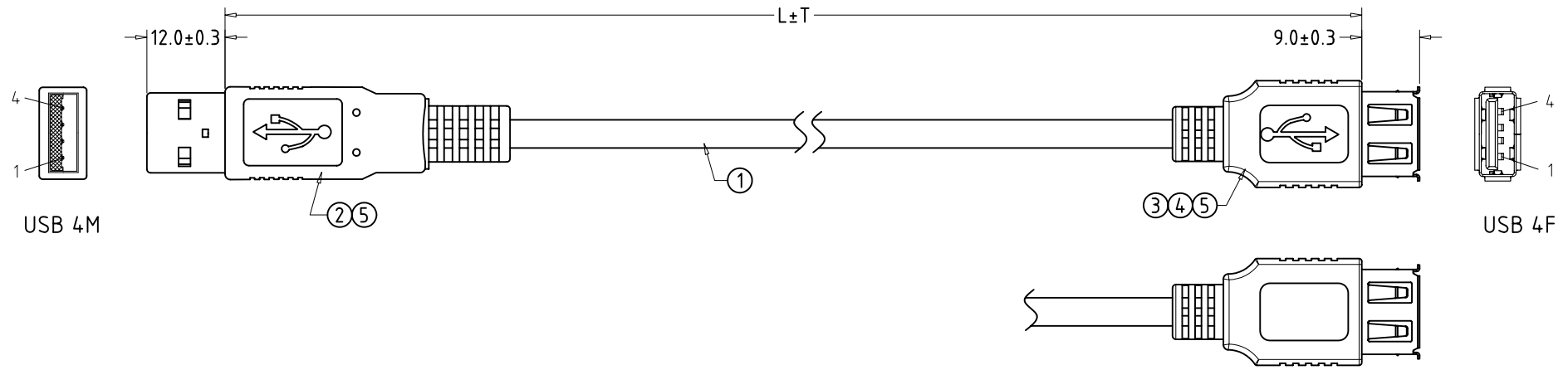
Produce must be conform to RoHS specification

PIN ASSIGNMENT:



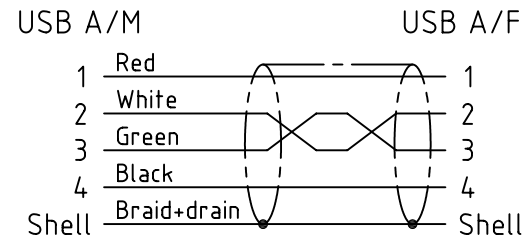
MATERIAL 	TOLERANCE UNSPECIFIED	FREEPORT	
	.xxx ±	SCALE	UNIT
	.xx ±	NON	mm
	.x ±	NAME	
ANGLE ±	DRAWN: Frank		SHEET
FINISH 	DESIGNER:		1/1
	CHECKED: Kris		
	APPROVED: Dived		DRAWING NO.
		18-940402xx	1.0

1		2		3		4		5		6		7		8	
CUSTOMER	CUST P/N	FREEPORT P/N		REV	ZONE	LTR	DESCRIPTION				DATE	REVISER	APPD		
All		18-940403xx													



RoHS Compliant

PIN ASSIGNMENT:



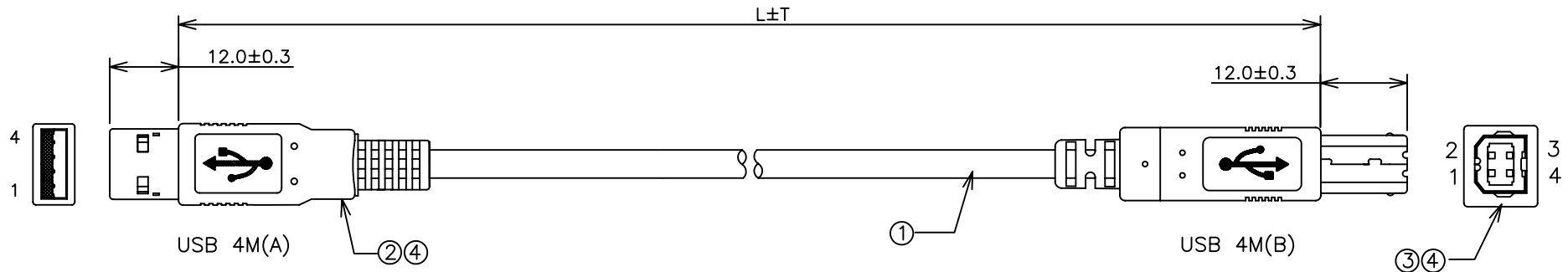
- MATERIAL:**
- 1)CABLE:UL2725(1P+2C)+AEB USB 2.0Rev)
 - 2)CONN:USB 4M A TYPE
 - 3)CONN:USB 4F A TYPE
 - 4)INNERMOLD:PE LOW DENSITY
 - 5)OVERMOLD:PVC 45Pa UL94V-0

- ELECTRICAL CHARACTER:**
- 1)100% OPEN&SHORT TESTING
 - 2)WITHSTANDING VOLTAGE:DC 300V 0.01Sec
 - 3)INSULATION RESISTANCE:10M Ohm(Min)
 - 4)CONDUCTIVE RESISTANCE:2 Ohm(Max)

Produce must be conform to RoHS specification

MATERIAL 	TOLERANCE UNSPECIFIED	FREEPORT		
	.xxx ±	SCALE	UNIT	
	.xx ±	NON	mm	
	.x ±	NAME		
· ±	DRAWN: Frank		SHEET 1/1	
ANGLE ±	DESIGNER:			
	CHECKED: Kris			
	APPROVED: Dived			
		DRAWING NO. 18-940403xx		REV 1.0

1	2		3	4	5		6		7	8	
CUSTOMER	CUST P/N	FREEPORT P/N			REV	ZONE	LTR	DESCRIPTION	DATE	REVISER	APPD
ALL		18-940404**									



PIN ASSIGNMENT:

USB 4 MALE(A)		USB 4 MALE(B)	
1	RED	1	
2	WHITE	2	
3	GREEN	3	
4	BLACK	4	
SHELL	BRAID+DRAIN	SHELL	

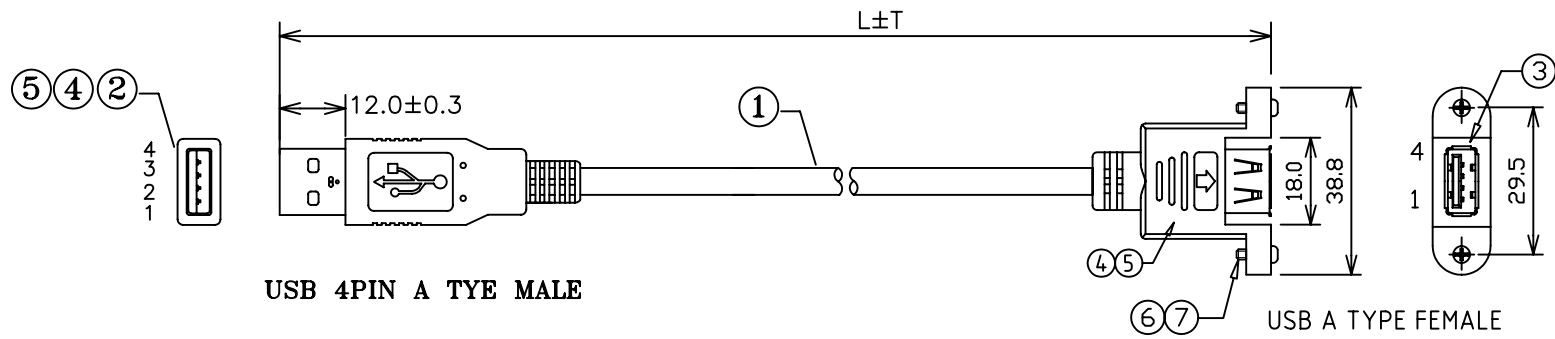
RoHS Compliant

ELECTRICAL CHARACTER:

- 100% OPEN&SHORT TEST ◦
- HI-POT: DC300V/0.01S
- INSULATION RESISTANCE: 10Mohm MIN
- CONTACT RESISTANCE: 2.0 Ohm MAX

4	PVC	PVC 45PA UL94-V0	
3	USB CONN	USB B TYPE 4PIN MALE	
2	USB CONN	USB A TYPE 4PIN MALE	
1	USB 2.0 CBLE	USB2.0 UL2725 1PR+2C AEB	
NO.	PART NAME	SPEC DESCRIPTION	REMAKE
MATERIAL	/	TOLERANCE UNSPECIFIED	FREEPORT
		± ± ± ± ANGLE ±	
FINISH	/	DRAWN: Frank	NAME ROUND CABLE
		DESIGNER:	
		CHECKED: Kris	DRAWING NO. 18-940404**
		APPROVED: Dived	

1	2	3	4	5	6	7	8		
CUSTOMER	CUST P/N	FREEPORT P/N	REV	ZONE	LTR	DESCRIPTION	DATE	REVISER	APPD
ALL		18-940405**							



USB 4PIN A TYE MALE

USB A TYPE FEMALE

PIN ASSIGNMENT:

USB AM		USB AF
1	RED	1
2	WHITE	2
3	GREEN	3
4	BLACK	4
SHELL	BRAID+DRAIN	SHELL

RoHS Compliant

ELECTRICAL CHARACTER:

- 1.100% OPEN&SHORT TEST
- 2.HI-POT:DC300V 10ms
3. Insulation Resistance:10M OHM MIN
4. Contact Resistance: 2.0 OHM MAX

7	HEX NUT	#4-40UNC TIMES ON THE WIDE-5.0mm	
6	SCREW	SHORT SCREW #4-40UNC L=7MM	
5	INNERMOLD	PE LOW DENSITY	
4	OVERMOLD	PVC 45Pa UL94V-0	
3	USB CONN	USB ATYPE FEMALE	
2	USB CONN	USB ATYPE MALE	
1	HDMI CABLE	USB 2.0 HIGH SPEED CABLE: UL2725 1P+ 2C AEB	

NO. PART	SPEC	REMAKE
MATERIAL	TOLERANCE UNSPECIFIED ± ± ± 0.5 ± ±	
FINISH	ANGLE ±	
DRAWN Frank		SCALE NON
DESIGNER		UNIT MM
CHECKED Kris		NAME USB CABLE
APPROVED Dived		
DRAWING NO. 18-940405**		SHEET 1/1
		REV 1.0